



Del Puerto WATER District

SAN JOAQUIN RIVER
CCID • CCC
EXCHANGE CONTRACTORS
FCWD • SLCC
WATER AUTHORITY

Community Workshop

December 11, 2019

DEL PUERTO CANYON RESERVOIR

**Water for the Economy
Water for the Environment
Storage for the Future**

Del Puerto Canyon Reservoir



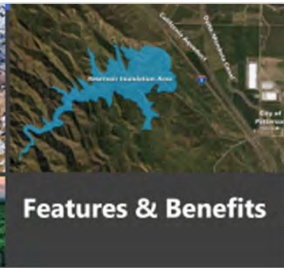
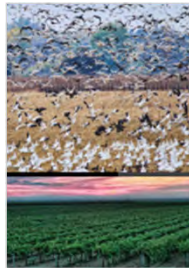
**WATER for
the
ECONOMY**



**WATER for the
ENVIRONMENT**



**STORAGE
for the
FUTURE**



Features & Benefits



Community Issues



**Draft
Environmental
Impact Report**



The slide features three circular inset images on the left side. The top circle shows a row of cherry blossom trees in full bloom under a clear blue sky. The middle circle shows a large flock of birds, possibly waterfowl, flying over a body of water with reeds. The bottom circle shows a green, rolling hill under a blue sky with white clouds. The background of the slide is dark gray with a horizontal bar at the top divided into blue, orange, and green segments.

Why Del Puerto Canyon Reservoir?

- Water for the Economy
- Water for the Environment
- Storage for the Future



WATER for the ECONOMY

Water for the Economy

- Agriculture is a key driver for the area economy and quality of life
 - Fruits, nuts, vegetables, livestock, poultry, dairy, and organic products
- \$7.15 billion into the Stanislaus County economy in 2017
 - More than 34,000 employees – nearly 1 in 8 jobs
- Total regional agricultural employment exceeds 100,000 jobs



Partners Have Experienced Significant Shortages and Decreased Reliability

DPWD Annual Surface Water Supplies (acre-feet per year)

Average Surface Water Need

90,000

Average Supplies Since 2010

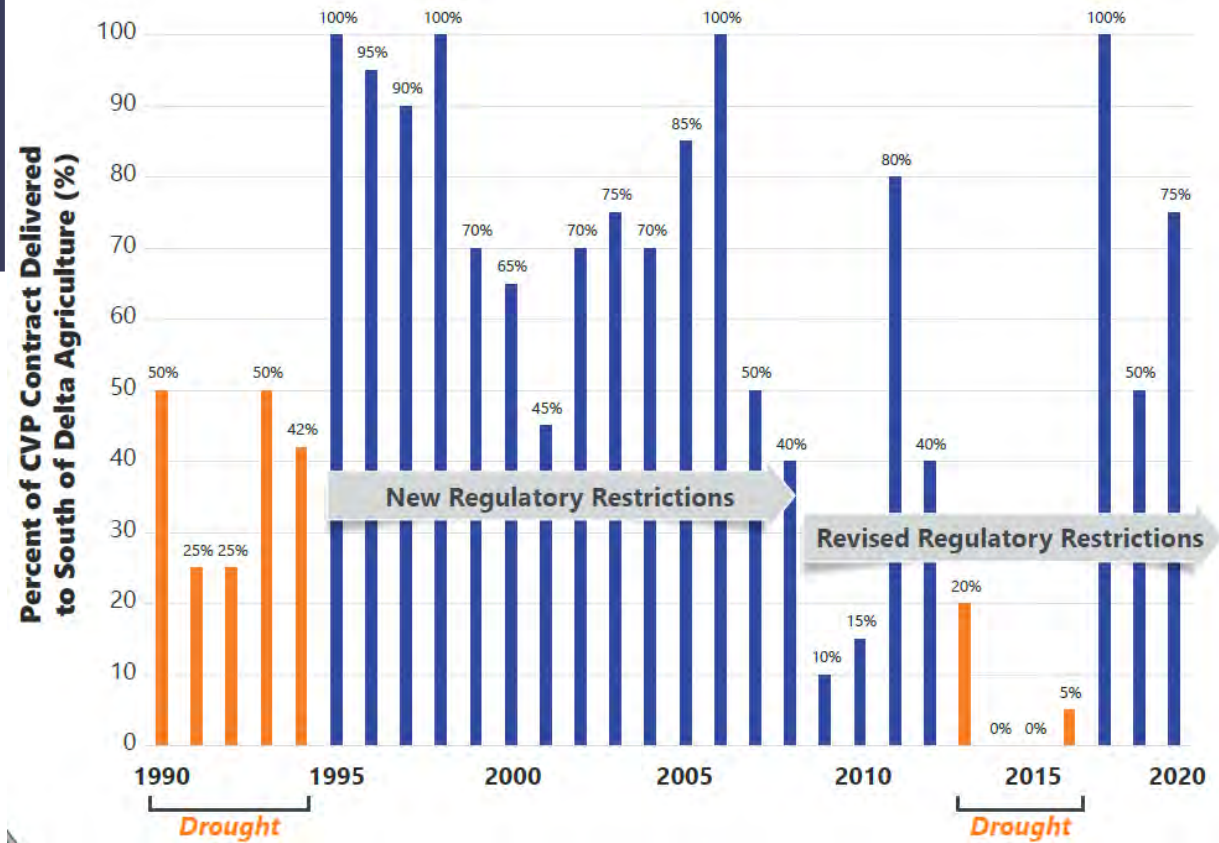
42,000

Allocation in 2014 & 2015

Zero



**Average CVP
Allocations
from 2010 to
2019 Were
39%**



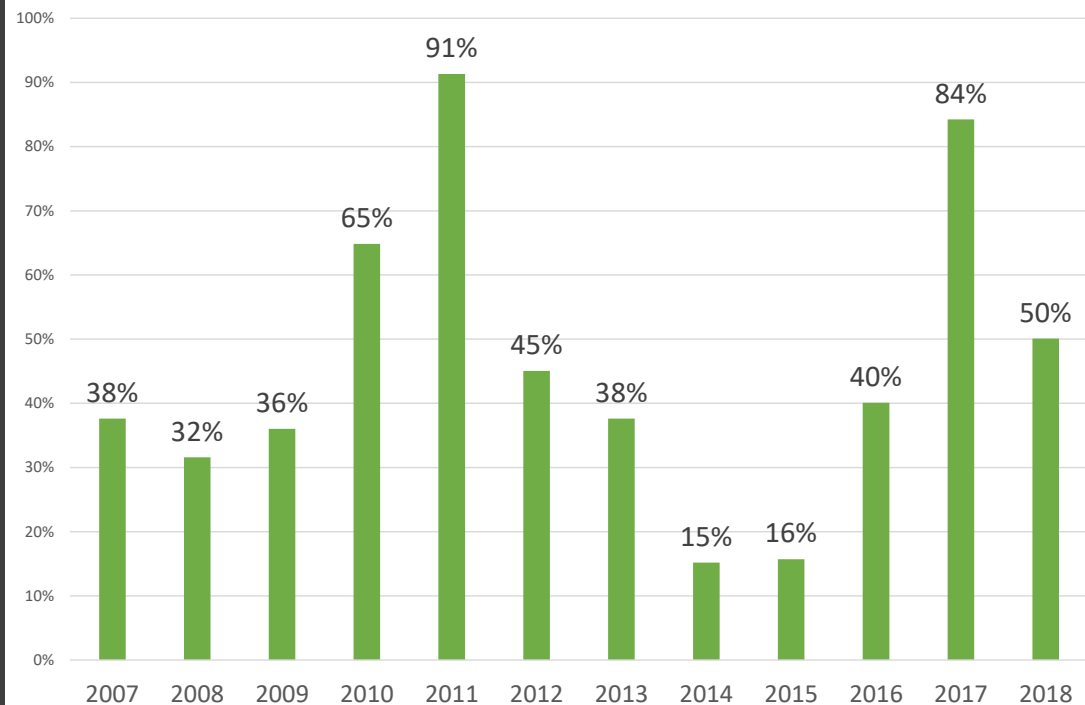


Water for Wildlife

Water supplies for wildlife refuges are constrained, similar to agriculture

Water deliveries for refuge management have averaged only 46% since 2007

Actual South-of-Delta Refuge Water Deliveries as % of Water Required for Optimal Management



Water for the Environment

Del Puerto Canyon Reservoir can provide stable, stored supplies for wildlife refuges

- Kern and San Luis National Wildlife Refuges
- Los Banos, Mendota, North Grasslands, and Volta Wildlife Areas
- Grassland Resource Conservation District.

New reservoir reduces constraints on refuge water supplies







Flood Protection

- Storm events can cause flooding on Del Puerto Creek
- New dam and reservoir will capture flood flows
- Moderated releases from reservoir will reduce flood impacts

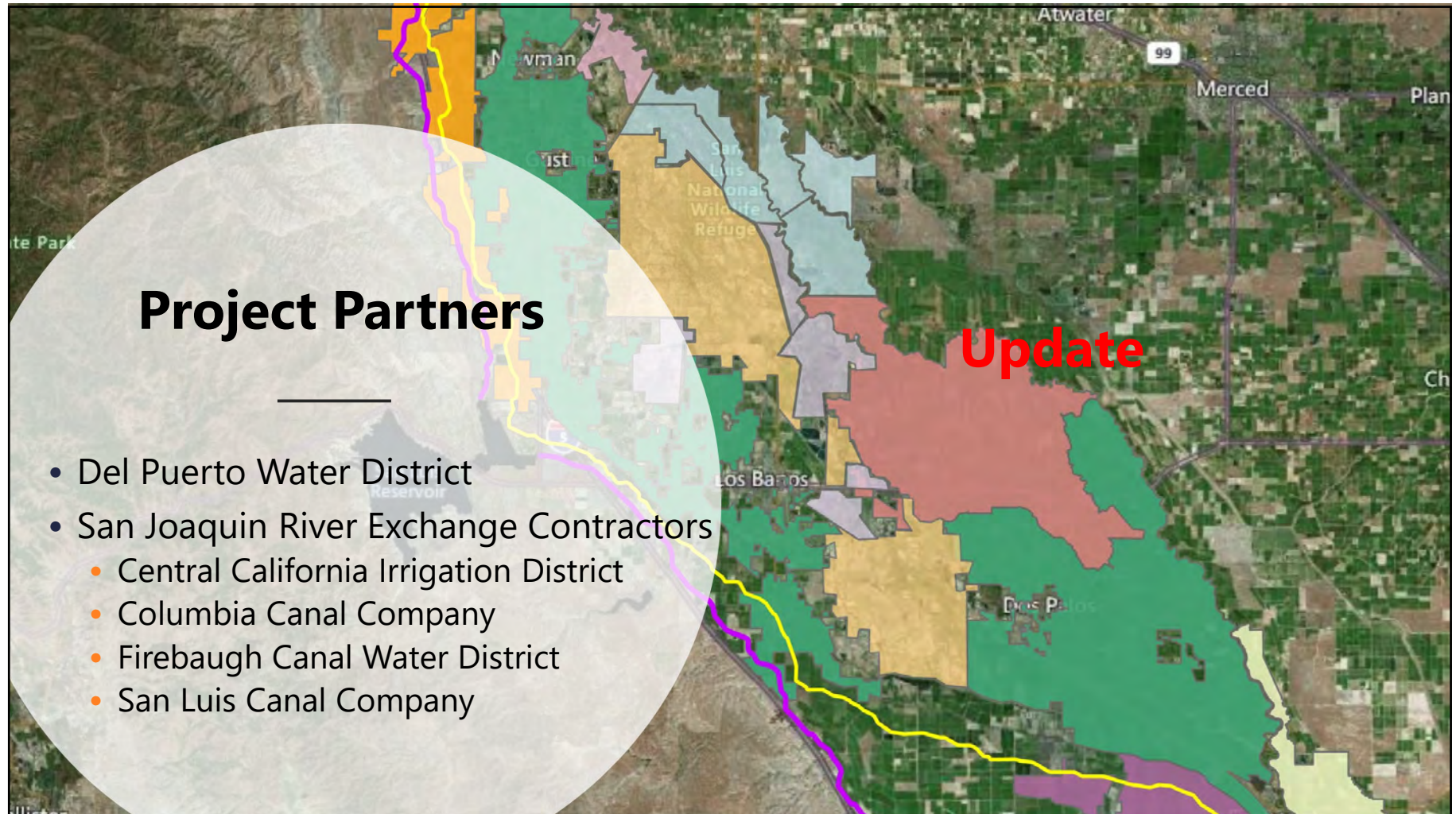


Groundwater Management

- Increased surface supplies reduces groundwater pumping
- Sustainable groundwater supports community water needs
 - Dos Palos
 - Firebaugh
 - Gustine
 - Los Banos
 - Mendota
 - Newman
 - Patterson
 - Westley



Features & Benefits





Del Puerto Canyon Reservoir Features

- Locally owned and controlled
- 82,000 acre-feet of storage
- 260-foot dam and three saddle dams
- Filled from Delta Mendota Canal (DMC)
- Supplies water to farmers and wildlife refuges served by the Central Valley Project via DMC



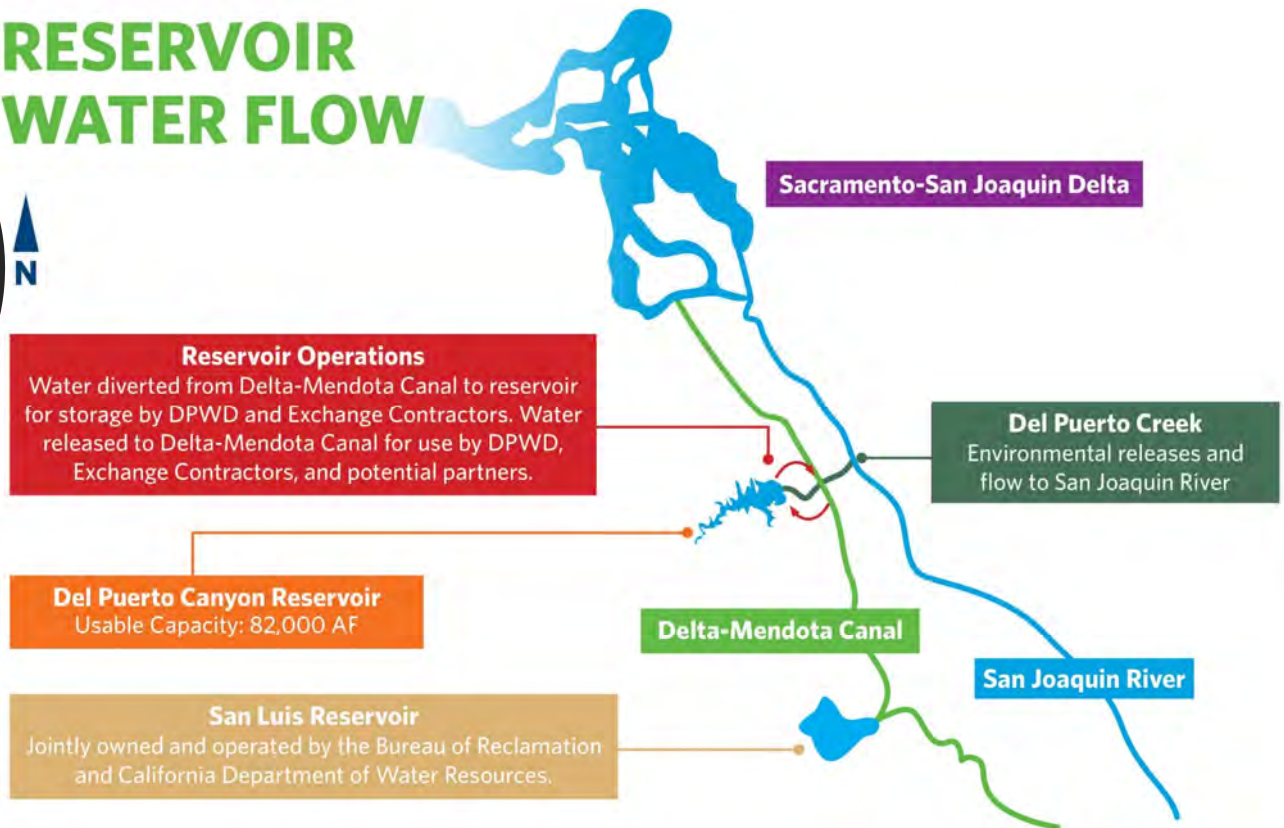
Project Benefits

- Water
 - Agriculture
 - Groundwater Management
- Environment
 - Wildlife Refuges
- Public Safety
 - Flood Protection
- Regional Economy
- Flexibility to Adapt to Future Changes

How it Works

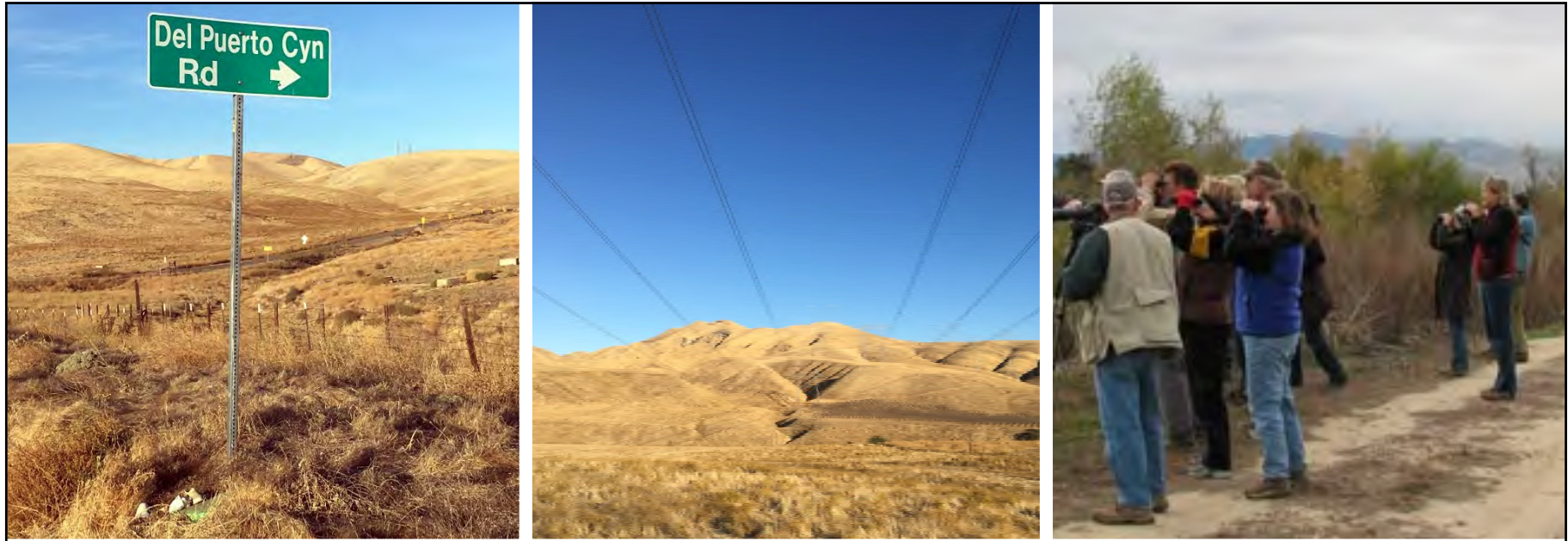
- Store water for droughts and dry seasons
- Reduce groundwater pumping to support sustainability

RESERVOIR WATER FLOW



Project Timeline





Community Issues

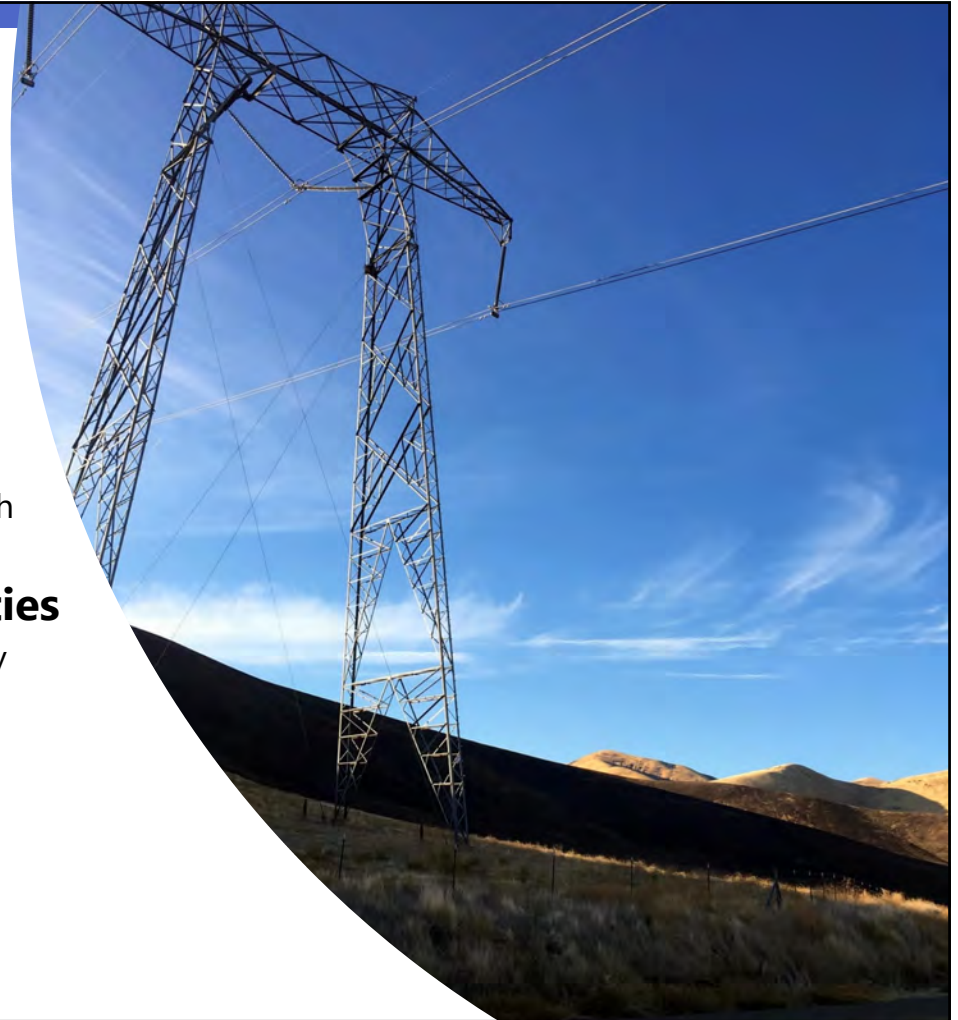


Community Issues

- Relocations – Road and utilities
- Recreation
- Canyon and creek resources
- Dam safety
- Cultural resources
- Other questions and comments

Relocations

- **Relocation of Del Puerto Canyon Road**
 - Options under consideration with Stanislaus County
- **Relocation of Major Utilities**
 - Discussions underway with utility owners



Road Relocation

- Discussions underway with County Public Works and local landowners

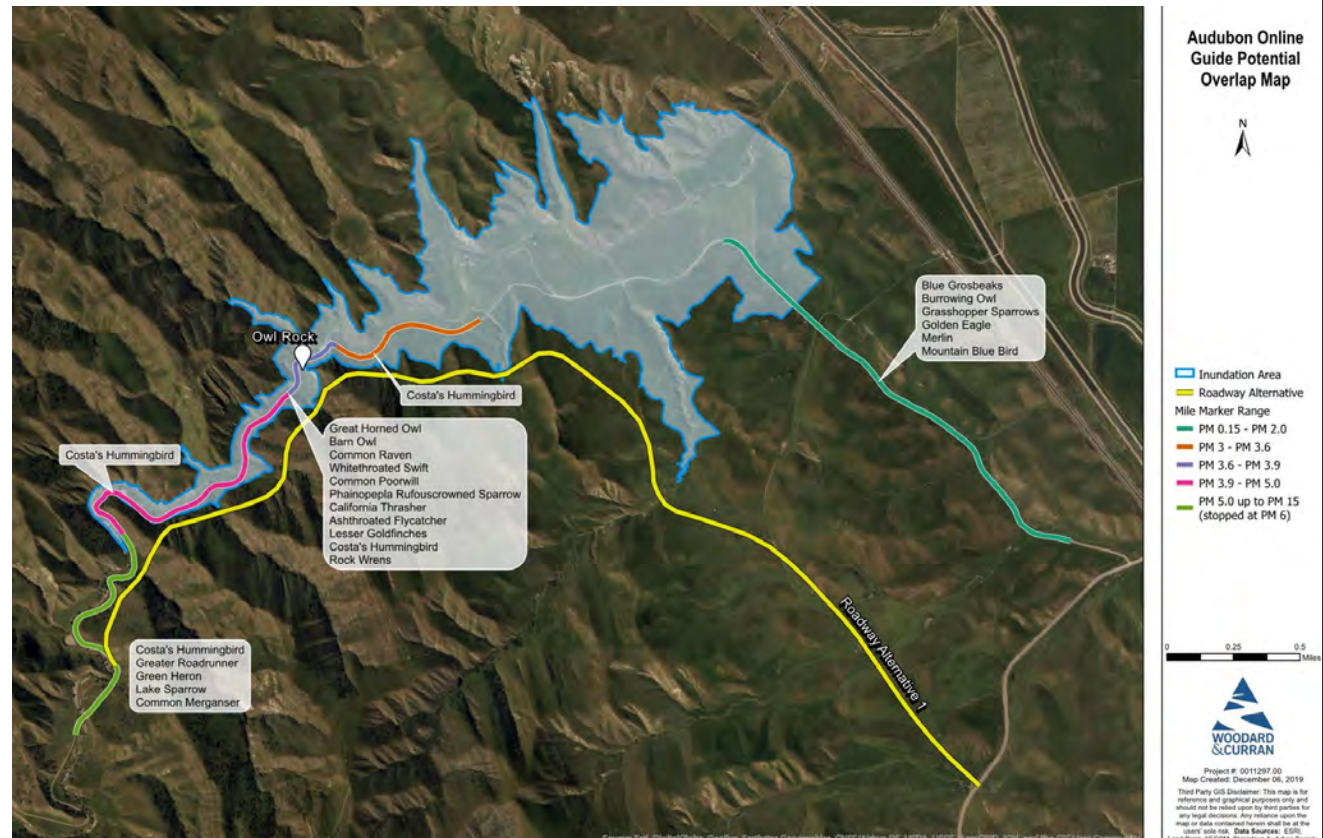


Recreation

- **Local Interest in Recreation**
 - Reservoir not suitable for water-based recreation
 - Other interests
 - Hiking
 - Picnicking
 - Birding
 - Bicycling
 - Camping
- **Discussions underway with City of Patterson and Stanislaus County**



Birdwatching



Canyon & Creek Resources

- **Biological Resources**

- Habitat in the Canyon is being evaluated
- Managing flows in Del Puerto Creek below dam for habitat and groundwater recharge



Dam Safety

- Seismic hazards analysis prior to construction to ensure safe design
- Dam design to latest federal and state safety standards
- Sensors in the dam for continuous monitoring



Flood Safety

- Capturing flood flows on Del Puerto Creek reduces flood risk downstream and need for flood insurance
- FEMA does not require flood insurance for properties downstream of a dam





Cultural Resources

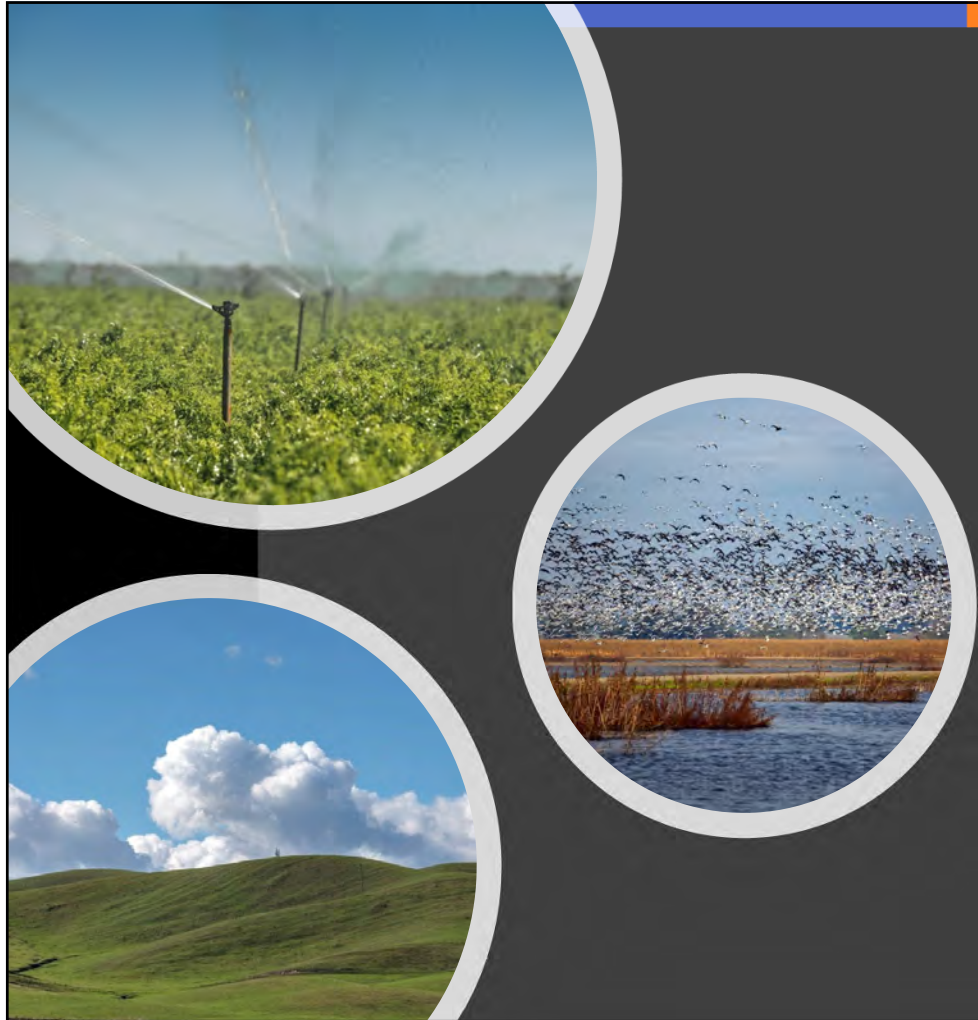
- Consultation with the Native American Heritage Commission (NAHC) has determined there are no Sacred Sites in the project area
- Additional studies have been conducted, along with continued Tribal outreach efforts



Draft Environmental Impact Report

- Available December 12
 - Online & Patterson Public Library, DPWD, Exchange Contractors
- Evaluates environmental issues, such as
 - Biological resources, traffic, air quality, water quality, and cultural resources
- Public comment meeting, January 15, 4:00 to 6:00 p.m.
 - Hammon Senior Center, 1033 W. Las Palmas Avenue, Patterson
- Comments due January 27 by 5:00 p.m.
 - Mrs. Anthea G. Hansen, Del Puerto Water District, P.O. Box 1596, Patterson, CA 95363, or ahansen@delpuertowd.org.
- Project website
 - delpuertocanyonreservoir.com



Three circular images are arranged on the left side of the slide. The top circle shows an irrigation system with multiple nozzles spraying water over a lush green field. The middle circle shows a large flock of white birds, possibly egrets or herons, standing in a shallow body of water with reeds. The bottom circle shows a rolling green landscape under a bright blue sky with large, fluffy white clouds.

Thank You

- Water for the Economy
- Water for the Environment
- Storage for the Future