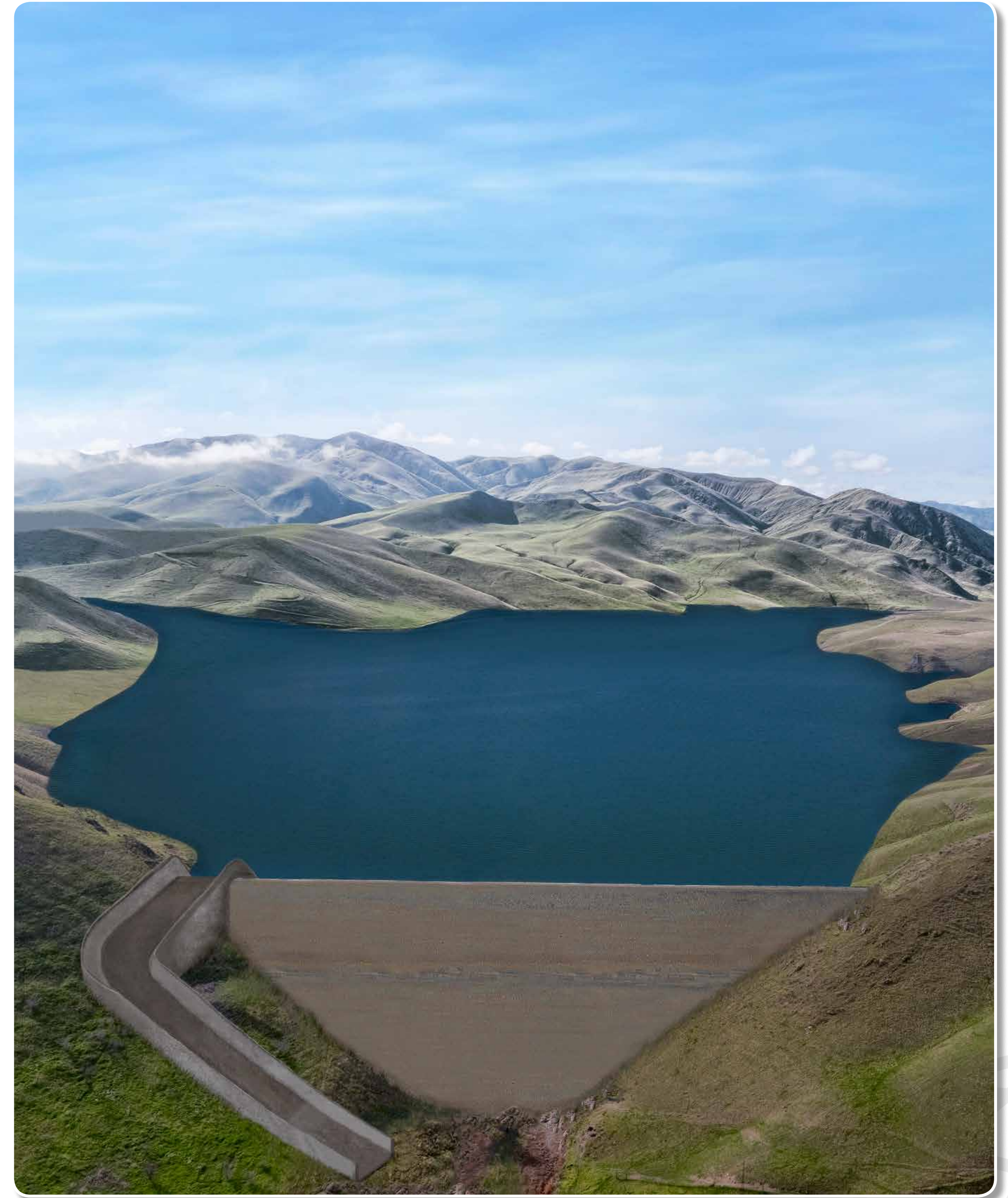


- Water storage
- Improve water management in Delta
- Improve water supply reliability
- Improve peak irrigation season water supplies
- Improve management of regional groundwater resources & support compliance with Sustainable Groundwater Management Act
- Regional self-reliance & economic benefits
- Increase flood protection to downstream infrastructure and communities
- Regional, State and National security from production of safe, abundant food supplies
- Development of Incremental Level 4 refuge water supply
- Cross-County water partnership opportunities





- Up to 85,000 AFY storage
- 55,000 to 60,000 AFY yield
- Approximately 300 CFS of Put/Take capacity
- Main dam with 200-foot-high crest, plus 4 saddle dams
- Connection to Delta-Mendota Canal
- Provision for future connection to California Aqueduct





## PURPOSE OF SCOPING

Provide the public and agencies an opportunity to offer input into the scope and content of the Environmental Impact Report, including:

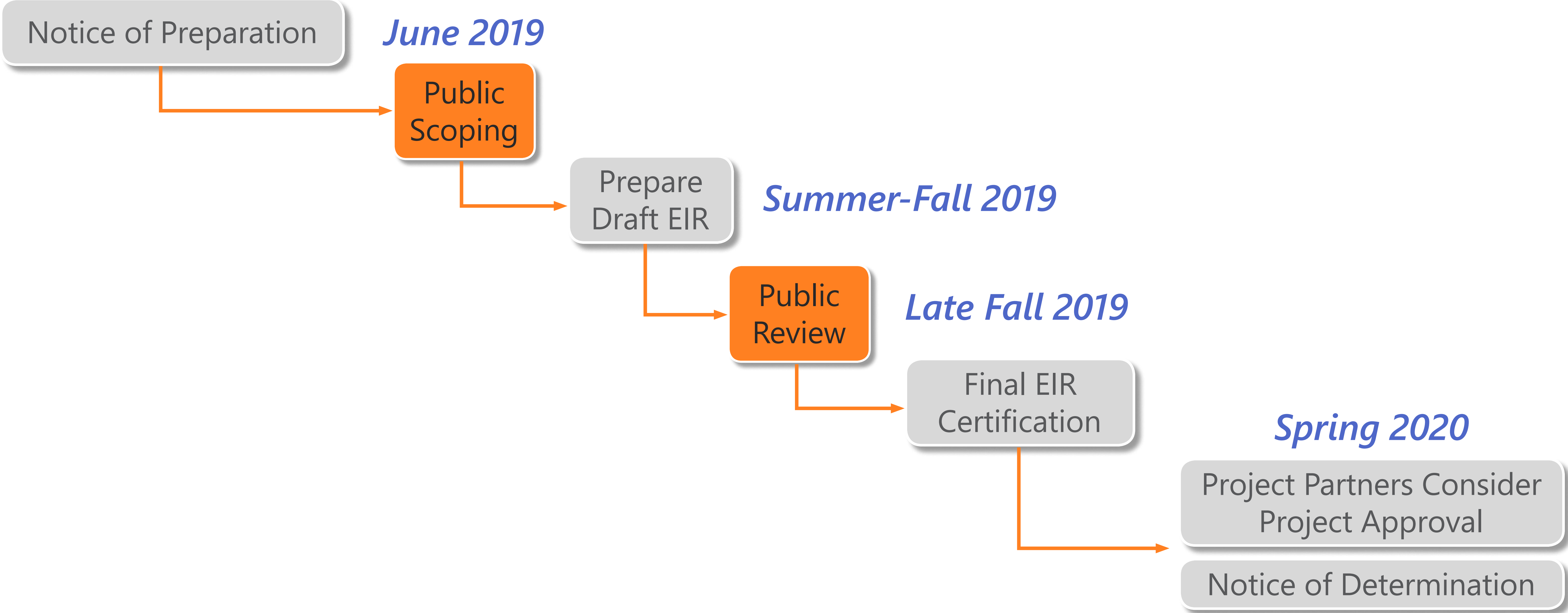
- Information useful to the analysis
- Potential environmental issues/ areas of concern
- Potential mitigation measures

## PROJECT OBJECTIVES

- Increase South-of-Delta water storage capacity by 85,000 TAF
- Improve water supply reliability for agriculture and the environment
- Increase peak irrigation season water supplies
- Improve ability to manage regional groundwater resources
- Improve regional self-reliance and economic benefit from agricultural production, jobs, and industry multipliers



## PROCESS & OPPORTUNITIES FOR PUBLIC INPUT



## WILL ADDRESS:

- Dam safety
- Seismic risk
- Biological resources
  - » Terrestrial
  - » Aquatic/fisheries
- Effect on Del Puerto Creek
  - » Hydrology
  - » Water Quality
- Construction effects
- Del Puerto Canyon Road relocation
- Relocation of utility corridor
- Tribal/cultural resources
- Aesthetics




# SUBMIT COMMENTS TO:

DEL PUERTO CANYON  
**RESERVOIR**

**Ms. Anthea Hansen**

Del Puerto Water District  
P.O. Box 1596  
Patterson, CA 95363

**Email:**

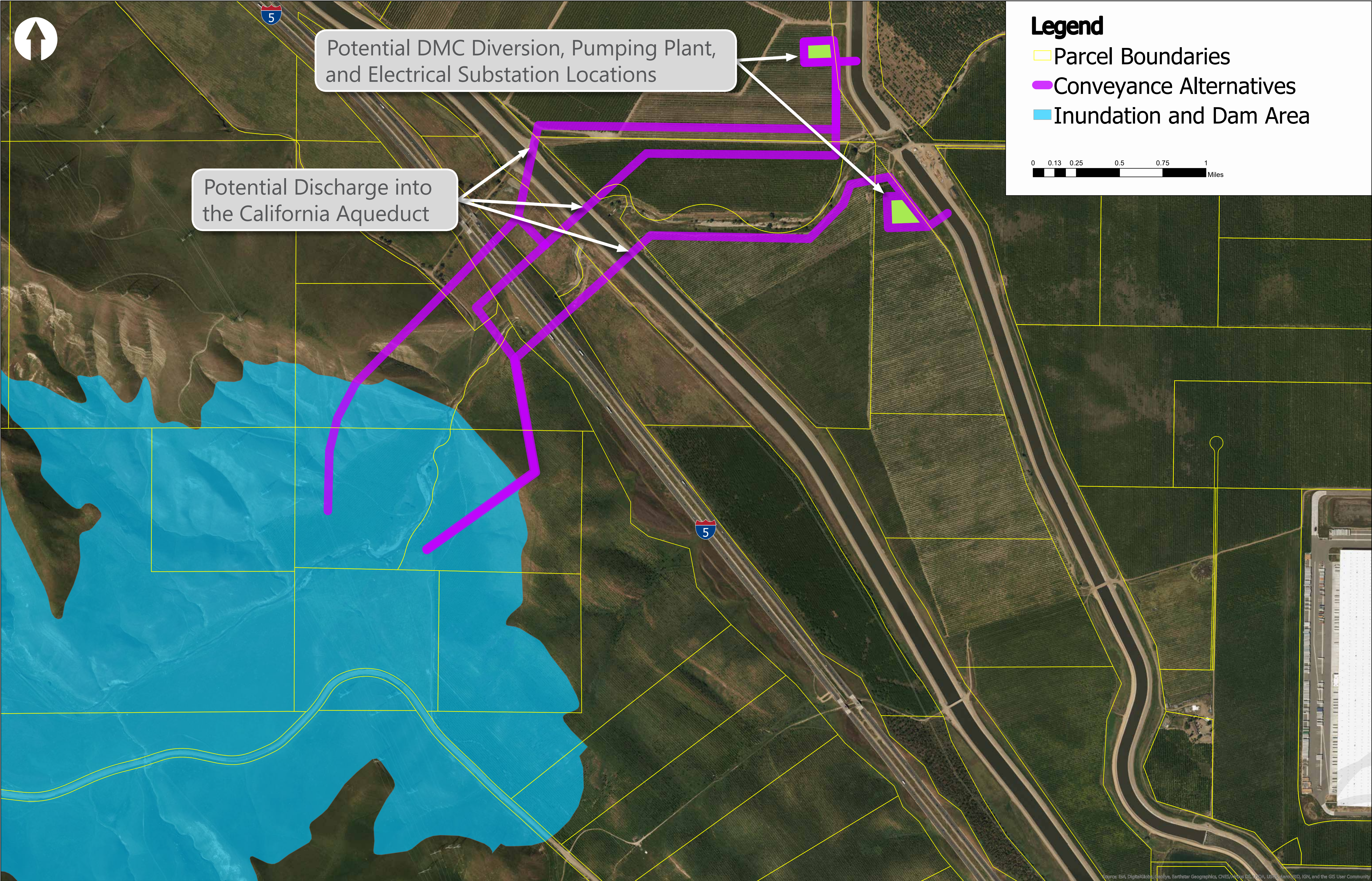
[ahansen@delpuertowd.org](mailto:ahansen@delpuertowd.org) 

**Project website:**

[delpuertocanyonreservoir.com](http://delpuertocanyonreservoir.com)   

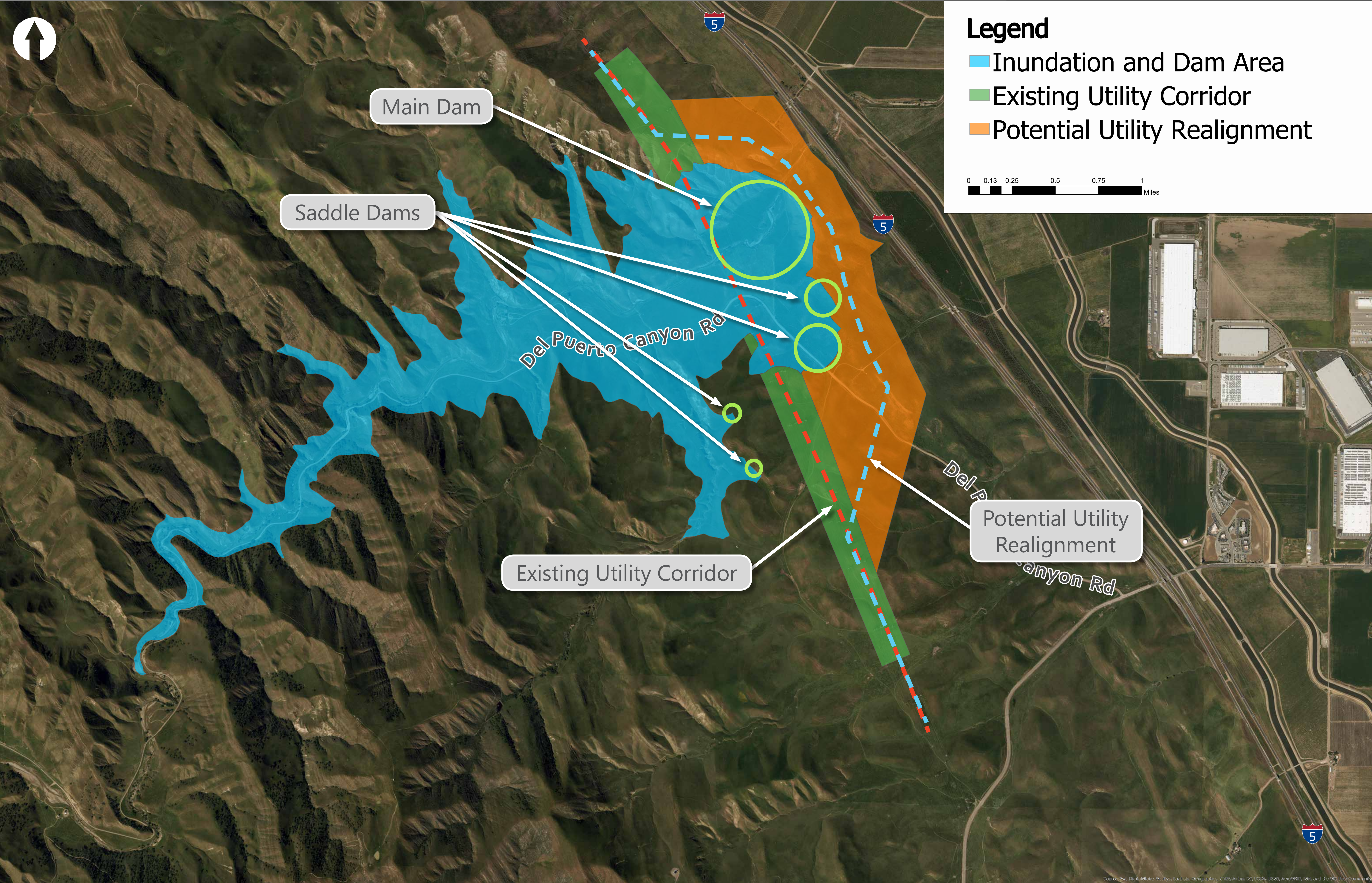


# PROJECT POTENTIAL CONVEYANCE ALTERNATIVES





# PROJECT RESERVOIR AND UTILITY CORRIDOR





# PROJECT ROADWAY ALTERNATIVES

